



SPARKEL™
Shining the future

Sparkel Introducing A Wide Range of Solar Powered Products



For Trade Enquiries : + 91 91680 12136 | mktg@sparkelindia.com | www.sparkelindia.com

Follow us on  : [Sparkelindia](https://www.facebook.com/Sparkelindia)

SOLAR / AUTOMOBILE LED BULB



Scan QR Code to
Purchase/Check Review



B22- 5W, 6W, 9W



E27- 5W, 6W, 9W

- ✓ **Original Edison** SMD LED's with 120 Lumens Output Per Watt
- ✓ **PCB with 1mm** thickness & 0.30 Micron Copper & with Inbuilt Heat Sink for better heat dissipation which is also extends life of LED's
- ✓ **Dimmable** & Low energy consumption
- ✓ **Available with** B22 (Indian) or E27 (Threaded) Bulb Base
- ✓ **Lifespan of** 30,000 Running Hours with UV & IR Free Light
- ✓ **Works best** ideally when used with Solar Charge Controller or Solar Regulator
- ✓ **Optional:** 5-meter cord + Holder available for connection
- ✓ **Color Temperature:** 6500K(Daylight)
- ✓ **Dimensions of 1 PC in cm (LxHxD):** 10x5x5
- ✓ **Available in :** Pack of 2, 4, 6, &10 Pcs
- ✓ **Warranty:** 5 Years LED's (If operated within range 10V to 14.5V DC)

B22 Bulb Base Model Nos	E27 Bulb Base Model Nos	Voltage (Volts)	Wattage (Watts)	Brightness (Lumens)
SPLEDB-602B22	SPLEDB-602E27	6V	6W	720
SPLEDB-502B22	SPLEDB-502E27	12V	5W	600
SPLEDB-902B22	SPLEDB-902E27	12V	9W	1080

WARNING : 1) Do not use with 230 Volts AC supply
2) Bulb or tubelight will get damaged if used with 230 Volt AC incoming supply in house

NOTE : 1) Can Be Connected to any 12V Battery, 12V Solar panel (through Regulator) Or 12V DC (Automobile or through Adaptor) supply etc.
2) **For Bulb:** If the bulb doesn't glow in first instance when put into the B22 Holder, rotate the bulb to match the polarities of holder i.e. positive of holder to positive of bulb & negative of holder to negative of bulb.

Applications :



For Product Videos
Scan QR Code



For Trade Enquiries : ☎ + 91 91680 12136 | ✉ mktg@sparkelindia.com | 🌐 www.sparkelindia.com

Follow us on : Sparkelindia

SOLAR / AUTOMOBILE LED TUBELIGHT



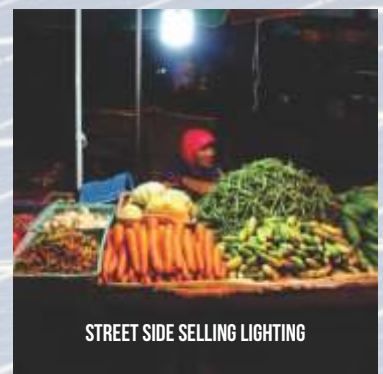
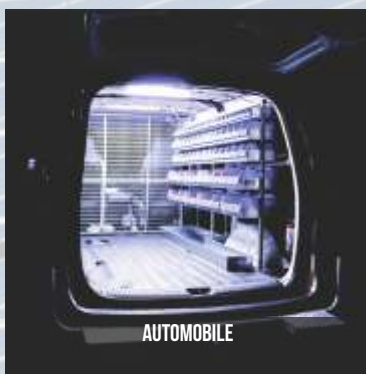
Scan QR Code to
Purchase/Check Review



7W, 9W, 11W, 14W, 22W

- ✓ **Original Edison** SMD LED's with 120 Lumens Output Per Watt
- ✓ **PCB with 1mm** thickness & 0.30 Micron Copper & with Inbuilt Heat Sink for better heat dissipation which is also extends life of LED's
- ✓ **Dimmable** & Low energy consumption
- ✓ **Lifespan of** 30,000 Running Hours with UV & IR Free Light
- ✓ **Color Temperature:** 6900K(Daylight)
- ✓ **Energy efficient** 90 percent energy saver
- ✓ **LED Tube** No Mercury, No UV & IR Rays Less Co2 emission, Eco-Friendly Less heat generated
- ✓ **Available in :** Pack of 2, 4, 6, &10 Pcs
- ✓ **Warranty:** 5 Years LED's (If operated within range 10V to 14.5V DC)

Solar/ DC Model No	Voltage (Volts)	Wattage (Watts)	TubeLight Length in Feet	Dimensions in cm (LxWxH)
SPLEDT-702	12V	7W	0.72	22 x 2.50 x 3.50
SPLEDT-702	24V	7W	0.72	22 x 2.50 x 3.50
SPLEDT-902	12V	9W	0.96	29 x 2.50 x 3.50
SPLEDT-1102	12V	11W	0.96	29 x 2.50 x 3.50
SPLEDT-1102	12V	11W	1.27	38 x 2.50 x 3.50
SPLEDT-1402	12V	14W	1.27	38 x 2.50 x 3.50
SPLEDT-1402PS	12V	14W	1.42	43 x 2.50 x 3.50
SPLEDT-1402P	24V	14W	1.42	43 x 2.50 x 3.50
SPLEDT-2202	12V	22W	1.91	57 x 2.50 x 3.50



Sparkel Power And Automation Solutions.

S. No. 7/3, Plot No 16, Anusaya Park Society, Kharadi, Pune – 411014, Maharashtra

For Trade Enquiries : ☎ + 91 91680 12136 | ✉ mktg@sparkelindia.com | 🌐 www.sparkelindia.com

STREETLIGHT GLASS



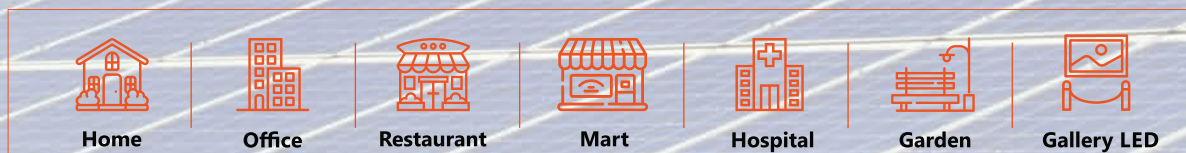
Scan QR Code to Purchase/Check Review



- ✓ **Original EDISON** SMD LED's with 120 Lumen Output Per watt
- ✓ **PCB with 1mm** thickness & heat sink for better heat dissipation which also extends life of LED's
- ✓ **Waterproof IP66** Grade Outdoor Body along with Toughened Glass on Top
- ✓ **Color Temperature:** 5700K (Cool White)
- ✓ **Available in:** 12VC DC (Solar Model) or 230V AC (Household Model)
- ✓ **Optional:** Complete set of Luminary, Battery (SMF or LifePO4), Controller, Solar panel along with Integrated panel frame & battery box can be supplied on request
- ✓ **Optional:** Non - Solar can be supplied with LDR Sensor
- ✓ **Recommended Pole Height:** 12W to 36: 3-5 mtr, 48W & Above: 6-7mtr
- ✓ **Warranty:** 5 Years LED's & 1 year Controller or Driver
- ✓ **Working Range:** 10V to 14.5V (DC) or 160V to 280V (AC)

Solar/ 12V DC Model Nos.	Non- Solar/ 230V AC Model Nos.	Wattage (Watts)	Brightness (Lumens)	Area Covered (sq ft)	Cavity Weight (Grams)	Dimensions in mm (W x H x D)
SPSST-120	SPSTL-120	12 W	1440	450	285	90 x 300 x 65
SPSST-180	SPSTL-180	16 W	1920	570	285	90 x 300 x 65
SPSST-240	SPSTL-240	24 W	2880	860	285	90 x 300 x 65
SPSST-360	SPSTL-360	36 W	4320	1300	660	120 x 350 x 65
SPSST-480	SPSTL-480	48 W	5760	1700	1280	190 x 400 x 65
SPSST-600	SPSTL-600	60 W	7200	2200	1280	190 x 400 x 65

Applications :



For Product Videos Scan QR Code



For Trade Enquiries : ☎ + 91 91680 12136 | ✉ mktg@sparkelindia.com | 🌐 www.sparkelindia.com

Follow us on  : Sparkelindia

SOLAR PACKS AVAILABLE ALONG WITH STREETLIGHTS



Luminary

+



Life PO4 Battery

+



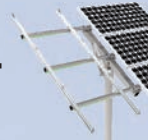
Poly SPV

+



Programmable Controller

+



SPV Frame

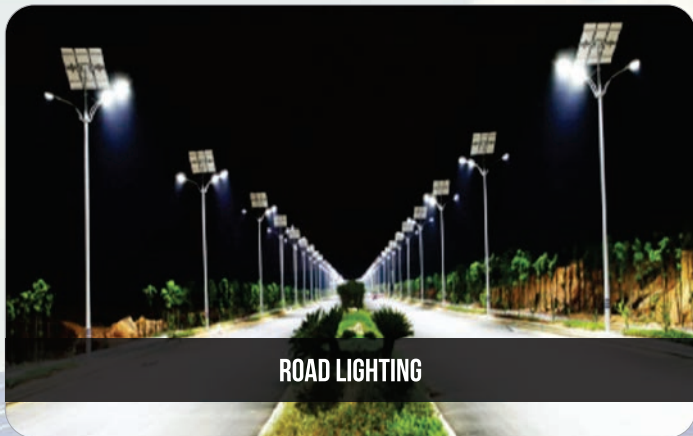
+



Battery Box

PRODUCT CODE	PRODUCT NAME & DESCRIPTION
SPSST - 120C	12W ST WITH CONTROLLER + 12AH BAT + 30W SPV + FRAME + BOX
SPSST - 180C	16W ST WITH CONTROLLER + 18AH BAT + 37W SPV + FRAME + BOX
SPSST - 240C	24W ST WITH CONTROLLER + 18AH BAT + 40W SPV + FRAME + BOX
SPSST - 360C	36W ST WITH CONTROLLER + 24AH BAT + 50W SPV + FRAME + BOX
SPSST - 480C	48W ST WITH CONTROLLER + 24AH BAT + 60W SPV + FRAME + BOX
SPSST - 600C	60W ST WITH CONTROLLER + 30AH BAT + 75W SPV + FRAME + BOX

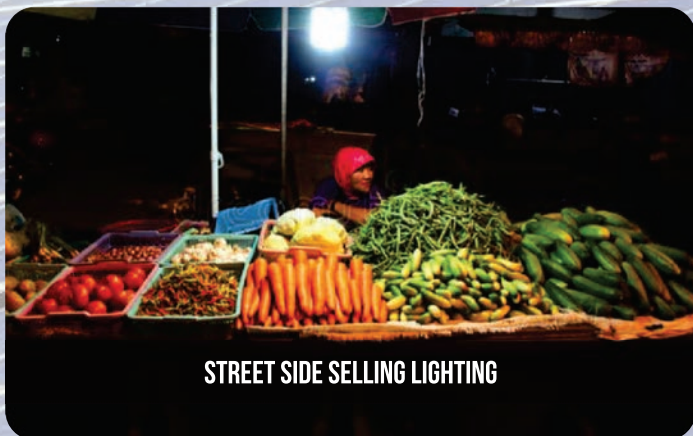
- NOTE :**
- 1) 12.8V LifePO4 battery size is considered for 12 hours run time (D2D)
 - 2) Recommended pole size: 3 to 5 mtr (12W to 36W), 6 to 7 mtr (48W & Above)
 - 3) Pole is not supplied in combo illustrated above
 - 4) Solar pack can be customized if runtime of more than 12hr is required



ROAD LIGHTING



WAREHOUSE OUTDOOR LIGHTING



STREET SIDE SELLING LIGHTING



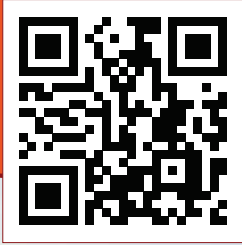
GARDEN LIGHTING

Sparkel Power And Automation Solutions.

Soc., S No.7/3, Plot No.16, Anusaya Park Kharadi ,Pune-411 014, Maharashtra ,India.

For Trade Enquiries : ☎ + 91 91680 12136 | ✉ mktg@sparkelindia.com | 🌐 www.sparkelindia.com

STREETLIGHT PC LENS



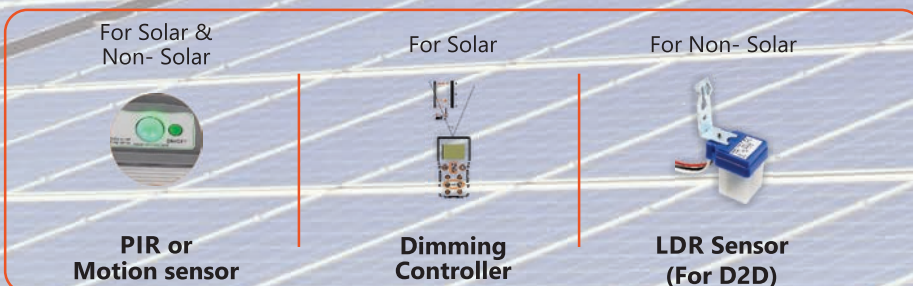
Scan QR Code to
Purchase/Check Review



- ✓ **Original EDISON** SMD LED's with 120 Lumen Output Per Watt
- ✓ **Durable Polycarbonate lense** which also boost brightness of streetlight
- ✓ **PCB with 1mm** thickness & heat sink for better heat dissipation which also extends life of LED's
- ✓ **Waterproof IP66** Grade Outdoor Body along with Toughened Glass on Top
- ✓ **Color Temperature:** 5700K (Cool White)
- ✓ **Available in :** 12VC DC (Solar Model) or 230V AC (Household Model)
- ✓ **Optional:** Solar model can be supplied with Dimming Control with Remote
- ✓ **Optional:** Solar model or Non-Solar can be supplied with PIR (Motion Sensor)
- ✓ **Optional:** Non-Solar model can be supplied with LDR Sensor
- ✓ **Optional:** Complete set of Luminary, Battery (SMF or LifePO4), Controller, Solar panel along with panel frame & battery box can be supplied on request
- ✓ **Recommended Pole Height:** 12W to 36: 3-5 mtr, 48W & Above: 6-7mtr
- ✓ **Warranty:** 5 Years LED's & 1 year Controller or Driver
- ✓ **Working Range:** 10V to 14.5V (DC) or 160V to 280V (AC)

Solar/12V DC Model Nos.	Non- Solar/ 230V AC Model Nos.	Wattage (Watts)	Equivalent Glass Model Wattage (Watts)	Brightness (Lumens)	Area Covered (sq ft)	Cavity Weight (Grams)	Dimensions in mm (W x H x D)
SPSPC-180	SPNPC-180	18 W	36 W	2160	775	387	110 x 300 x 60
SPSPC-320	SPNPC-320	32 W	50 W	4320	1550	520	130 x 360 x 60
SPSSPC-600	SPNPC-600	60 W	80 W	7200	2600	950	140 x 400 x 60

Optional Accessories :



For Product Videos
Scan QR Code



For Trade Enquiries : ☎ + 91 91680 12136 | ✉ mktg@sparkelindia.com | 🌐 www.sparkelindia.com

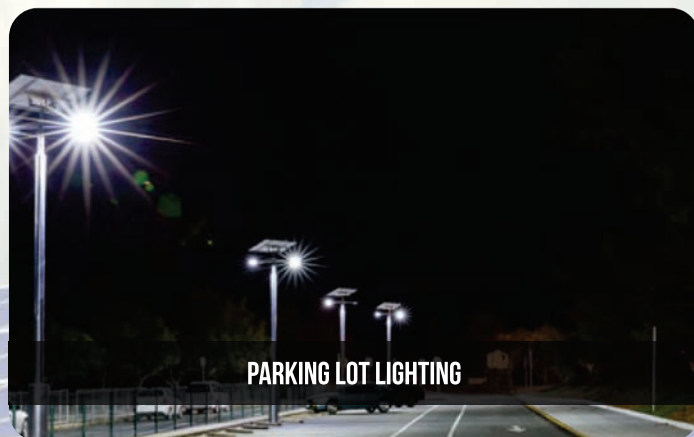
Follow us on : Sparkelindia

SOLAR PACKS AVAILABLE ALONG WITH STREETLIGHT PC LENS



PRODUCT CODE	PRODUCT NAME & DESCRIPTION
SPSPC-180C	18W ST WITH CONTROLLER + 18AH BAT + 37W SPV + FRAME + BOX
SPSPC-320C	32W ST WITH CONTROLLER + 24AH BAT + 50W SPV + FRAME + BOX
SPSPC-600C	60W ST WITH CONTROLLER + 30AH BAT + 75W SPV + FRAME + BOX

- NOTE :**
- 1) 12.8V LifePO4 battery size is considered for 12 hours run time (D2D)
 - 2) Recommended pole size: 3 to 5 mtr (12W to 36W), 6 to 7 mtr (48W & Above)
 - 3) Pole is not supplied in combo illustrated above
 - 4) Solar pack can be customized if runtime of more than 12hr is required



Sparkel Power And Automation Solutions.

Soc., S No.7/3, Plot No.16, Anusaya Park Kharadi ,Pune-411 014, Maharashtra ,India.

For Trade Enquiries : ☎ + 91 91680 12136 | ✉ mktg@sparkelindia.com | 🌐 www.sparkelindia.com

FLOODLIGHT GLASS DOWN CHOKE



Scan QR Code to
Purchase/Check Review



24W

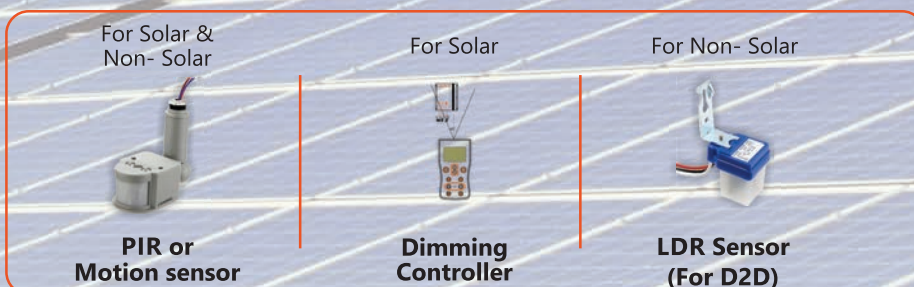
36W

60W

- ✓ **Original EDISON** SMD LED's with 120 Lumen Output Per Watt
- ✓ **PCB with 1mm** thickness & heat sink for better heat dissipation which also extends life of LED's
- ✓ **Waterproof** IP66 Grade Outdoor Body along with Toughened Glass on Top
- ✓ **Color Temperature:** 5700K (Cool White)
- ✓ **Available in :** 12VC DC (Solar Model) or 230V AC (Household Model)
- ✓ **Optional:** Solar model can be supplied with Dimming Control with Remote
- ✓ **Optional:** Solar or Non-Solar Models can be supplied with PIR (Motion) sensor
- ✓ **Optional:** Non-Solar model can be supplied with LDR Sensor
- ✓ **Optional:** Complete set of Luminaire, Battery (LifePO4) Controller, Solar panel along with panel frame with battery box can be supplied upon request
- ✓ **Recommended wall mounting Height:** 12W to 36 : 3-5 mtr, 48W & Above: 6-7mtr ,
- ✓ **Beam Angle:** 120 degrees
- ✓ **Warranty:** 5 Years LED's & 1 year Controller or Driver
- ✓ **Working Range:** 10V to 14.5V (DC) or 160V to 280V (AC)

Solar/12V DC Model Nos.	Non- Solar/ 230V AC Model Nos.	Wattage (Watts)	Brightness (Lumens)	Area Covered (sq ft)	Cavity Weight (Grams)	Dimensions in mm (W x H x D)
SPSDC-240	SPNSDC-240	24 W	2880	860	950	195 x 40 x 36
SPSDC-360	SPNSDC-360	36 W	4320	1300	950	195 x 40 x 36
SPSDC-600	SPNSDC-600	60 W	5760	1700	1500	240x 60 x 37

Optional Accessories :



For Product Videos
Scan QR Code



SOLAR PACKS AVAILABLE ALONG WITH FLOODLIGHT DOWN CHOKE



+



+



+



+



+



Floodlight Glass
Down Choke

Life PO4 Battery

Poly SPV

Programmable
Controller

SPV Wall Mount
Frame

Battery Box

PRODUCT CODE	PRODUCT NAME & DESCRIPTION
SPSDC-240C	24W FLDC WITH CONTROLLER + 18AH BAT + 40W SPV + FRAME + BOX
SPSDC-360C	36W FLDC WITH CONTROLLER + 24AH BAT + 50W SPV + FRAME + BOX
SPSDC-600C	60W FLDC WITH CONTROLLER + 30AH BAT + 75W SPV + FRAME + BOX

- NOTE :**
- 1) 12.8V LifePO4 battery size is considered for 12 hours run time (D2D)
 - 2) Recommended Installation Height : 3 to 5 mtr (12W to 36W), 6 to 7 mtr (48W & Above)
 - 3) Pole is not required in this combo as it is wall mounted
 - 4) **Solar pack can be customized if runtime of more than 12hr is required**



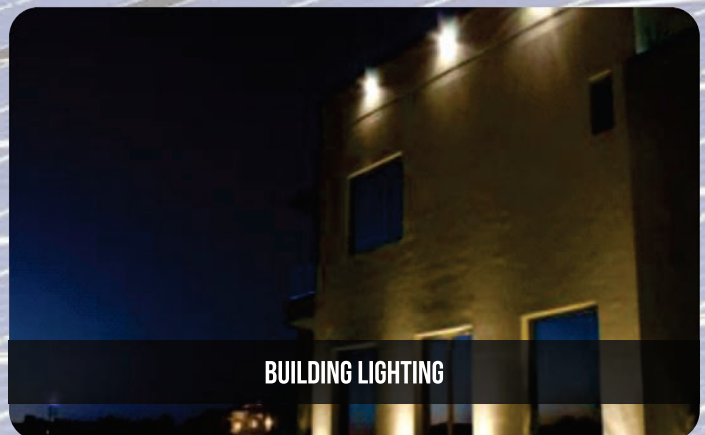
WAREHOUSE LIGHTING



SPORTS STADIUM LIGHTING



MALL OUTDOOR LIGHTING



BUILDING LIGHTING

Sparkel Power And Automation Solutions.

Soc., S No.7/3, Plot No.16, Anusaya Park Kharadi ,Pune-411 014, Maharashtra ,India.

For Trade Enquiries : ☎ + 91 91680 12136 | ✉ mktg@sparkelindia.com | 🌐 www.sparkelindia.com

FLOODLIGHT GLASS BACK CHOKE



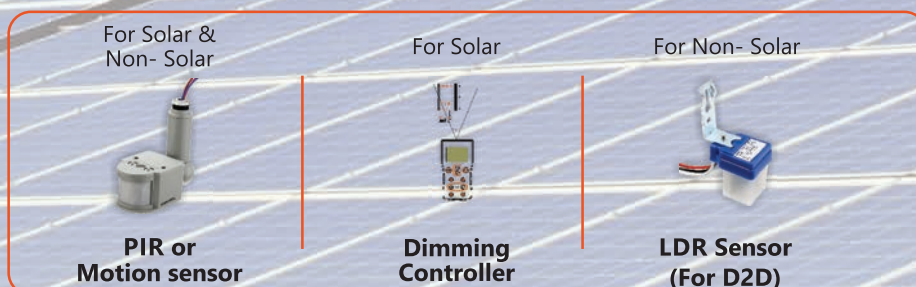
Scan QR Code to Purchase/Check Review



- ✓ **Original EDISON** SMD LED's with 120 Lumen Output Per Watt
- ✓ **PCB with 1mm** thickness & heat sink for better heat dissipation which also extends life of LED's
- ✓ **Waterproof** IP66 Grade Outdoor Body along with Toughened Glass on Top
- ✓ **Color Temperature:** 5700K (Cool White)
- ✓ **Available in :** 12VC DC (Solar Model) or 230V AC (Household Model)
- ✓ **Optional:** Solar model can be supplied with Dimming Control with Remote
- ✓ **Optional:** Solar or Non-Solar Models can be supplied with PIR (Motion) sensor
- ✓ **Optional:** Non-Solar model can be supplied with LDR Sensor
- ✓ **Optional:** Complete set of Luminaire, Battery (LifePO4) Controller, Solar panel along with panel frame with battery box can be supplied upon request
- ✓ **Recommended wall mounting Height:** 12W to 36: 3-5 mtr, 48W & Above: 6-7mtr ,
- ✓ **Beam Angle:** 120 degrees
- ✓ **Warranty:** 5 Years LED's & 1 year Controller or Driver
- ✓ **Working Range:** 10V to 14.5V (DC) or 160V to 280V (AC)

Solar/12V DC Model Nos.	Non- Solar/ 230V AC Model Nos.	Wattage (Watts)	Brightness (Lumens)	Area Covered (sq ft)	Cavity Weight (Grams)	Dimensions in mm (W x H x D)
SPSBC-120	SPNSBC-120	12 W	1440	380	950	195 x 40 x 36
SPSBC-180	SPNSBC-180	16 W	1920	570	950	195 x 40 x 36
SPSBC-240	SPNSBC-240	24 W	2880	860	950	195 x 40 x 36
SPSBC-360	SPNSBC-360	36 W	4320	1300	1500	240x 60 x 37
SPSBC-600	SPNSBC-600	60 W	7200	2200	1500	240x 60 x 37

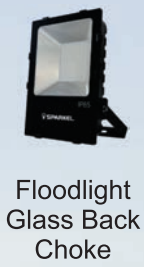
Optional Accessories :



For Product Videos Scan QR Code



SOLAR PACKS AVAILABLE ALONG WITH FLOODLIGHT GLASS BACK CHOKE



+



+



+



+



+

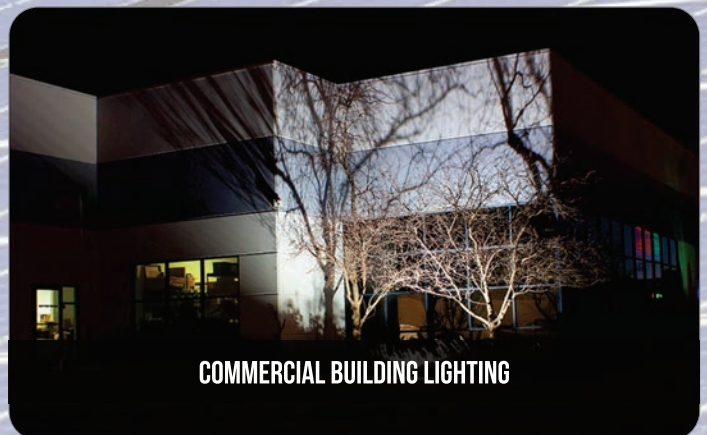


PRODUCT CODE

PRODUCT NAME & DESCRIPTION

SPSBC-120C	12W FLBC WITH CONTROLLER + 12AH BAT + 30W SPV + FRAME + BOX
SPSBC-180C	16W FLBC WITH CONTROLLER + 18AH BAT + 37W SPV + FRAME + BOX
SPSBC-240C	24W FLBC WITH CONTROLLER + 18AH BAT + 40W SPV + FRAME + BOX
SPSBC-360C	36W FLBC WITH CONTROLLER + 24AH BAT + 50W SPV + FRAME + BOX
SPSBC-600C	60W FLBC WITH CONTROLLER + 30AH BAT + 75W SPV + FRAME + BOX

- NOTE :**
- 1) 12.8V LifePO4 battery size is considered for 12 hours run time (D2D)
 - 2) Recommended Installation Height : 3 to 5 mtr (12W to 36W), 6 to 7 mtr (48W & Above)
 - 3) Pole is not required in this combo as it is wall mounted
 - 4) Solar pack can be customized if runtime of more than 12hr is required



Sparkel Power And Automation Solutions.

Soc., S No.7/3, Plot No.16, Anusaya Park Kharadi ,Pune-411 014, Maharashtra ,India.

For Trade Enquiries : ☎ + 91 91680 12136 | ✉ mktg@sparkelindia.com | 🌐 www.sparkelindia.com

PWM SOLAR CHARGE CONTROLLER



Scan QR Code to Purchase/Check Review

Compatible For :
VRLA/SMF, AGM,
Lead Acid Battery



SPSCC-110



SPSCC-100 &
SPSCC-200



SPSCC-220



SPSCC-230



SPSCC-240 &
SPSCC-480

- ✓ **High efficient** PWM charging, increases battery life & improve solar system performance.
- ✓ **Programmable** Load Output and Dusk to Dawn Feature available for models 1 to 5
- ✓ **Intelligent** optimization microcontroller based processes to control and realize the SOC control along with MOSFET technology
- ✓ **Manual operation** function to control On/Off Load
- ✓ **Dual USB** 5 V output for model no.2 to 5 can charge & offer power supply for smartphones and other USB charging devices
- ✓ **Settings** (model no. 2 to 7): Battery Float Voltage, Low Voltage Disconnect, Load Recovery Voltage
- ✓ **Protections:** Reverse Polarity, Overheating, Overcharging, Over discharging, Short Circuit & Surge Protection upto 10KVA
- ✓ **Compatible Battery Types:** VRLA/SMF, AGM, Lead Acid
- ✓ **Max PV Open Circuit Voltage:** 25 V (for 12 V System), 50 V (for 24 V System), 75 V (for 36 V System) & 100 V (for 48 V System)

Sr.No	Product Code	Current Rating (Amps)	System / Battery Bus Voltage (Volts)	Max Panel Wattage (Watts)	Dimensions in cm (L x W x H)	Weight (Grams)
1	SPSCC-110	10 A	12 V/24 V	200 W/400 W	13.5 x 8 x 4	150
2	SPSCC-100	10 A	12 V/24 V	200 W/400 W	13.5 x 8 x 4	132
3	SPSCC-200	20 A	12 V/24 V	400 W/800 W	13.5 x 8 x 4	132
4	SPSCC-220	20 A	12 V/24 V	400 W/800 W	30 x 10 x 15	320
5	SPSCC-230	30 A	12 V/24 V	600 W/1200 W	30 x 10 x 15	320
6	SPSCC-240	30 A	12 V/24 V	600 W/1200 W	20 x 6 x 12	841
7	SPSCC-480	40 A	24 V/36 V/48 V	1600 W/2400 W/3200 W	20 x 6 x 12	841

Applications :



For Product Videos
Scan QR Code



For Trade Enquiries : ☎ + 91 91680 12136 | ✉ mktg@sparkelindia.com | 🌐 www.sparkelindia.com

Follow us on : Sparkelindia

PWM SOLAR CHARGE CONTROLLER (Li-ion & LiFePO4)

- ✓ **Super Intelligent** PWM Solar Charge Controller 12 V/ 24 V/ 36 V/ 48 V 50 A
- ✓ **Supports all battery types:** Lead Acid, SMF, VRLA, Gel/AGM, LifePO4, Li-ion
- ✓ **Maximum Open Circuit Voltage:** 25 V/ 50 V/ 75 V/ 100 V for 12V/ 24 V/ 36 V/ 48 V System
- ✓ **Lithium Ion Battery:** 3.7 V/cell, 3S 11.1 V/ 4S 14.8 V
- ✓ **LifePO4 Battery:** 3.2 V/ cell, 4S 12.8 V/ 5S 16 V
- ✓ **Display Parameters:** Temp, Charge Current, Discharge Current, Charge Ah, Discharge Ah, Battery Type, Recovery Voltage, Cut Off Voltage, Absorption Voltage, Cut off Current, Low Voltage Recovery & Low Voltage Disconnect



SPSCC-3048



SPSCC-5048

- ✓ **Protections** –Reverse Polarity, Overheating, Overcharging, Over Discharging, Short Circuit & Surge Protection up to 10KVA
- ✓ **Customize** Charge Voltages of Li-ion & LifePO4 Battery
- ✓ **Light Control Mode:** D2D & Reverse Light Control Mode
- ✓ **SPSCC-3048:** Dual USB Charging 5 V 2 A

Solar Charge Controller Model No	Current Rating (Amps)	System /Battery Bus Voltage (Volts)	Panel Size Voltage	Max Panel Wattage (Watts)	Dimensions in cm (L x W x H)	Weight (Grams)
SPSCC-3048	30 A	12 V/ 24 V/ 36 V/ 48 V	36 V / 60 V	600 W/1200 W/1800 W/2400 W	20 x 11 x 6	400
SPSCC-5048	50 A	12 V/ 24 V/ 36 V/ 48 V	36 V / 72 V	1000 W/2000 W/3000 W/4000 W	24 x 14 x 7	650

- NOTE :**
- 1) Connection Sequence: Battery First, Then Solar Panel & Then Load, Disconnection Sequence: Follow Reverse Sequence.
 - 2) Make sure the rated voltage of solar panels are in compatible with battery bus voltage.
 - 3) The maximum current of solar panels and load must be less than the rated current of controller.



ROOFTOP SOLAR GENERATING SYSTEM



SOLAR RV CAMPING



SOLAR STREETLIGHT



COMPLETE-IRRIGATION-GARDEN

Sparkel Power And Automation Solutions.

S. No.7/3, Plot No.16, Anusaya Park Kharadi ,Pune-411 014, Maharashtra ,India.

For Trade Enquiries : ☎ + 91 91680 12136 | ✉ mktg@sparkelindia.com | 🌐 www.sparkelindia.com

BATTERY CHARGERS – LEAD ACID/SMF BATTERY



Scan QR Code to
Purchase/Check Review



6V



12V



12V



12/24V



48V



24V-120V

- ✓ **Intelligent SMPS** technology with charging algorithm ensures maximum charge return for Lead Acid and SMF type batteries
- ✓ **High rated charging** current even at low mains voltages for faster charging
- ✓ **CVCC Type Of Battery Charger** Ensures four stage healthy charging which maintains battery life
- ✓ **Automatically** stops charging when battery is fully charged
- ✓ **Electronically Protected** with internal temperature sensor
- ✓ **Inbuilt** Over Temperature and Short Circuit Protection
- ✓ **SP153A-BCA** is compatible with Electrical Agriculture Sprayer
- ✓ **All Chargers** are supplied with crocodile clips or battery ring terminal as per requirement of battery
- ✓ **SP2415-BC and SP2412020A-BC** – Battery Charging voltage and battery charging current adjustment is possible

Model No	Suitable for Battery (Volts)	Suitable for Battery Capacity (Ah)	Max Charging Current (Amps)	Max Bulk Charging Voltage (Volts)	Weight (Kg)	Dimensions in mm (W x H x D)
SP752A-BC	6V	10 Ah	2A	7.5V	0.3	70 x 90 x 50
SP153A-BC	12V	20 Ah	3A	14.5-15V	0.8	60 x 120 x 60
SP153A-BCA	12V	20 Ah	3A	14.5-15V	0.8	60 x 120 x 60
SP2415-BC	12/24V	180Ah	18A	16V	1.2	270 x 95 x 190
SP4812A-BC	48V	150 Ah	12A	62-64V	2.50	280 x 95 x 135
SP4815A-BC	48V	200 Ah	15A	62-64V	2.50	280 x 95 x 135
SP2412020A-BC	24V to 120V	200 Ah	20A	160V	40	400 x 600 x 400

Applications :



Automobile



Battery Shops



Residential



UPS Systems



Agricultural Use

For Product Videos
Scan QR Code



BATTERY CHARGERS – Li-Ion or LifePO4 or NCM

- ✓ **Selectable Charging Current and Voltage profile** optimized for Lithium Ion LFP/LiFePO4 or NMC/NCM or Lead Acid chemistry battery packs for E-Rickshaw or E-Scooter or similar EV application (SPES-6712)
- ✓ **Charging Current and Voltage profile** optimized for Lithium Ferrous Phosphate (LFP)/LiFePO4 chemistry battery packs (SPES-5517, SPES-6712)
- ✓ **High Efficiency** with Power factor correction to reduce Power Consumption from Mains
- ✓ **High charging** current even at low mains voltages for faster charging
- ✓ **Electronic Reverse Battery** Protection – enhanced safety and avoid inconvenient fuse replacement in case of accidental reverse connection



12.8V

12/24V

48V - 51.2V

60V - 84V

- ✓ **Informative** Battery Bar Graph and Mains indication along with audio alarms
- ✓ **Compact Size** for easy handling
- ✓ **Informative user interface** shows various current and voltage parameters on LCD Display along with LED Indications and audio alarms (SPES-6712)
- ✓ **Configurable battery type**, current and voltage settings to suit a wide range of battery packs (SP2415-BC and SPES-8325)

Model No	Suitable For Battery Type	Suitable for Battery (Volts)	Suitable for no of Cell of Battery Type	Suitable for Battery Capacity (Ah)	Max Charging Current (Amps)	Charging Voltage (Volts)	Weight (Kg)	Dimensions in mm (W x H x D)
SPES-153	LifePO4	12.8 V	4	10 Ah	3A	14.6V	0.8	60 x 120 x 60
SP2415-BC	LifePO4	12.8V & 25.6V	4 or 8	180Ah	15A	14.5 to 29.20	1.2	270 x 95 x 190
SPES-5517	LifePO4	48V	15	56Ah	17A	54.6V	2.5	280 x 95 x 135
SPES-6712	LifePO4	64V	19	40Ah	12A	72.8V	2.5	280 x 95 x 135
SPES-8325	LifePO4, Li-Ion, NCM, Lead Acid	16 to 22 Cells (LifePO4), 4 to 5 Series (Lead Acid), 14 to 20 cells (Li-Ion or NMC)	16 to 22 (LifePO4)	150Ah	15 to 35A	60 to 84V	15	280 x 95 x 135



LEAD ACID CHARGING



E-SCOOTER CHARGING



E-RICKSHAW



SOLAR BATTERY CHARGING

Sparkel Power And Automation Solutions.

S. No.7/3, Plot No.16, Anusaya Park Kharadi ,Pune-411 014, Maharashtra ,India.

For Trade Enquiries : ☎ + 91 91680 12136 | ✉ mktg@sparkelindia.com | 🌐 www.sparkelindia.com

MINI PORTABLE UPS



Scan QR Code to Purchase/Check Review



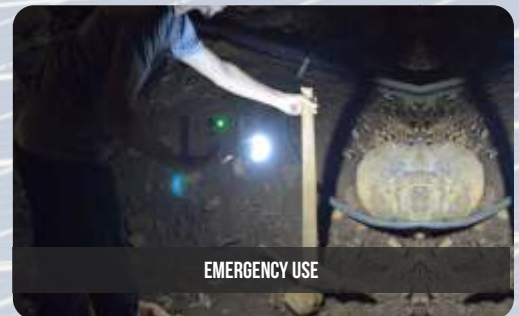
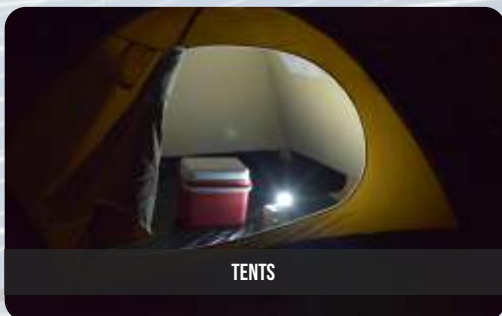
- ✓ **Mini portable** DC UPS with output voltage of 6V DC or 12V DC to run lighting load
- ✓ **USB output** of 5V 1.5A, compatible for USB charging devices such as smart phones, power banks or 5V DC USB Fan
- ✓ **Dual Charging Option:** Mains Charging And / Or Solar Charging (Solar Panel is not supplied along with kit)
- ✓ **Charging/Mains On Indicator** or Load On Indicator to show charging and usage indication respectively replacement in case of accidental reverse connection Informative Battery Bar Graph and Mains indication along with audio alarms
- ✓ **Battery Protection :** Overcharge and over-discharge protection

SPSHLS-310/3106Li

- ✓ **SPSHLS-310** – supplied with main unit, Battery, Mains Adapter, 6V 6W B22 LED bulb, 5 mtr double insulated cable along with DC Pin and E27 holder, 6V 6W E27 LED Bulb
- ✓ **SPSHLS-3106Li** – supplied with main unit, Battery, Mains Adapter, 12V 5W B22 LED bulb, 5 mtr double insulated cable along with DC Pin & E27 holder, 12V 5W E27 LED Bulb

Model No	Battery Voltage (Volts)	Battery Capacity (Ah)	Battery Type	Total Watt - Hours (Whr)	Compatible Solar Panel (Watts)	Mains Adapter Rating	Charging Time* (Hrs)	Load Connected in Watts	Back Up Time** (Hrs)	Weight (Kg)	Dimensions in mm (W x H x D)
SPSHLS-310	6V	4.5 Ah	SMF/VRLA	27	18 Cell 5W	7.5V 1A	6	6W	4.5	1.7	100 x 150 x 100
SPSHLS-3106Li	12.8V	6 Ah	LiFePO4	75	36 Cell 20W	14.5V 2A	4	5W	15	1.4	100 x 150 x 100

- * Charging time is subjective to available charge in battery and also based on solar intensity (charging voltage and current supplied by solar panel through out day)
- ** Back up time is subjective to actual charge available in battery and also based on total load connected to the unit in terms of watts.
- *** Solar Panel is not supplied along with kit, it is available for purchase separately



Applications :



For Product Videos Scan QR Code



For Trade Enquiries : + 91 91680 12136 | mktg@sparkelindia.com | www.sparkelindia.com

Follow us on : Sparkelindia

PORTABLE UPS

- ✓ **Portable DC UPS** with output voltage of 12V DC to run DC lighting, DC Fan and other 12V DC Rated Products load
- ✓ **USB output** of 5V 1.5A, compatible for USB charging devices such as smart phones, power banks or 5V DC USB Fan
- ✓ **Dual Charging Option:** Mains Charging And / Or Solar Charging (Solar Panel is not supplied along with kit)
- ✓ **Charging and battery capacity** indicators 25%, 50%, 75% and 100%.
- ✓ **Battery** Overcharge and over-discharge protection
- ✓ **In Built** 12W LED Light in the front enables dual usage of emergency lamp or home lighting system
- ✓ **Provision** of connecting external charged battery to increase back up time
- ✓ **DC LED Bulbs** along with 5 meter double insulated cord with molded pin & On-Off Switch for individual bulb



SPSHLS-100/106Li

- ✓ **SPSHLS-100** – supplied with main unit, Battery, Mains Adapter, 12V 5W E27 LED bulbs with , 5 mtr double insulated cable along with DC Pin and E27 holder
- ✓ **SPSHLS-106Li** – supplied with main unit, Battery, Mains Adapter, 12V 5W E27 LED bulbs with 5 mtr double insulated cable along with DC Pin and E27 holder replacement in case of accidental reverse connection Informative Battery Bar Graph and Mains indication along with audio alarms

Model No	Battery Voltage (Volts)	Battery Capacity (Ah)	Battery Type	Total Watt - Hours (Whr)	Compatible Solar Panel (Watts)	Mains Adapter Rating	Charging Time* (Hrs)	Load Connected in Watts	Back Up Time** (Hrs)	Weight (Kg)	Dimensions in mm (W x H x D)
SPSHLS-100	12V	7.2 Ah	SMF/VRLA	85	36Cell 60W	12V 1A	8	5W	15	5.5	220 x 150 x 130
SPSHLS-106Li	12.8V	6 Ah	LiFePO4	75	36Cell 40W	12V 1A	5	5W	15	3.5	220 x 150 x 130

* Charging time is subjective to available charge in battery and also based on solar intensity (charging voltage & current supplied by solar panel through out day)

** Back up time is subjective to actual charge available in battery and also based on total load connected to the unit in terms of watts.

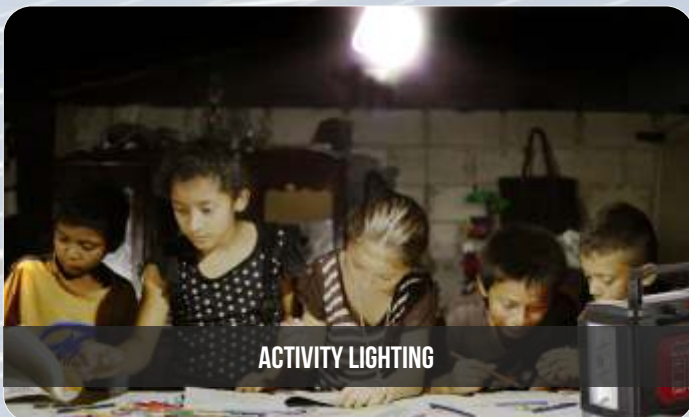
*** Do Not Connect solar panel of more capacity than mentioned in above table



WORK AREA LIGHTING



STUDY LIGHTING



ACTIVITY LIGHTING



OUTDOOR CAMPING

Sparkel Power And Automation Solutions.

S. No.7/3, Plot No.16, Anusaya Park Kharadi ,Pune-411 014, Maharashtra ,India.

For Trade Enquiries : ☎ + 91 91680 12136 | ✉ mktg@sparkelindia.com | 🌐 www.sparkelindia.com

PORTABLE UPS

- ✓ **Portable DC UPS** with output voltage of 12V DC to run DC lighting, DC Fan and other 12V DC Rated Products load
- ✓ **USB output** of 5V 1.5A, compatible for USB charging devices such as smart phones, power banks or 5V DC USB Fan
- ✓ **Dual Charging Option:** Mains Charging And / Or Solar Charging (Solar Panel is not supplied along with kit)
- ✓ **Charging** and battery capacity indicators 25%, 50%, 75% & 100%.
- ✓ **Battery** Overcharge and over-discharge protection
- ✓ **Provision of connecting external charged** battery to increase back up time
- ✓ **DC LED Bulbs** along with 5 meter double insulated cord with molded pin



SPSHLS-207/212
SPSHLS-212Li/218Li

- ✓ **SPSHLS-207/212Li** – supplied with main unit, Battery, Mains Adapter, 4 nos of 12V 5W E27 LED bulbs with 5 mtr double insulated cable along with DC Pin and E27 holder, 1 no of 12V 5W B22 LED Bulb
- ✓ **SPSHLS-212/218Li** – supplied with main unit, Battery, Mains Adapter, 4 nos of 12V 9W E27 LED bulbs with 5 mtr double Insulated cable along with DC Pin and E27 holder, 1 no of 12V 9W B22 LED Bulb

Model No	Battery Voltage (Volts)	Battery Capacity (Ah)	Battery Type	Total Watt - Hours (Whr)	Compatible Solar Panel (Watts)	Mains Adapter Rating	Charging Time* (Hrs)	Load Connected in Watts	Back Up Time** (Hrs)	Weight (Kg)	Dimensions in mm (W x H x D)
SPSHLS-207	12V	7.2 Ah	SMF/VRLA	85	36Cell 60W	12V 1A	8	5W	15	5.5	220 x 150 x 130
SPSHLS-212	12V	12 Ah	SMF/VRLA	145	36Cell 75W	12V 2A	8	9W	15	7.5	220 x 150 x 130
SPSHLS-212Li	12.8V	12 Ah	LiFePO4	150	36Cell 75W	12V 2A	6	5W	15	4.5	220 x 150 x 130
SPSHLS-218Li	12.8V	18 Ah	LiFePO4	230	36Cell 100W	12V 2A	8	9W	23	5.5	220 x 150 x 130

* Charging time is subjective to available charge in battery and also based on solar intensity (charging voltage and current supplied by solar panel through out day)

** Back up time is subjective to actual charge available in battery and also based on total load connected to the unit in terms of watts.

*** Do Not Connect solar panel of more capacity than mentioned in above table



Applications :



For Product Videos
Scan QR Code



For Trade Enquiries : + 91 91680 12136 | mktg@sparkelindia.com | www.sparkelindia.com

Follow us on : Sparkelindia

PORTABLE UPS

- ✓ **Portable DC UPS** with output voltage of 12V DC to run DC lighting, DC Fan and other 12V DC Rated Products
- ✓ **USB output** of 5V 1.5A, compatible for USB charging devices such as smart phones, power banks or 5V DC USB Fan
- ✓ **Dual Charging Option:** Mains Charging And / Or Solar Charging (Solar Panel is not supplied along with kit)
- ✓ **Digital Indication** of battery voltage and charging details
- ✓ **User can customize battery charge** voltage, load recovery voltage and battery cut of voltage
- ✓ **Programmable option** of turning on load automatically with D2D function or to turn on at dusk and turn off at set time
- ✓ **Provision** to connect as much as 400 Watts of 36 Cell solar panels to connect and run solar devices through day
- ✓ **Provision** of connecting external charged battery to increase back up time



SPSCCK-307/312
SPSCCK-312Li/318Li

- ✓ **DC LED Bulbs** along with 5 meter double insulated cord with molded pin
- ✓ **SPSCCK-307**– supplied with main unit, Battery, Mains Adapter, 3 nos of 12V 5W E27 LED bulbs with 5 mtr double insulated cable along with DC Pin and E27 holder, 1 no of 12V 5W B22 LED Bulb
- ✓ **SPSCCK-312/312Li/318Li** – supplied with main unit, Battery, Mains Adapter, 3 nos of 12V 9W E27 LED bulbs with 5 mtr double insulated cable along with DC Pin and E27 holder, 1 no of 12V 9W B22 LED Bulb

Model No	Battery Voltage (Volts)	Battery Capacity (Ah)	Battery Type	Total Watt - Hours (Whr)	Compatible Solar Panel (Watts)	Mains Adapter Rating	Charging Time* (Hrs)	Load Connected in Watts	Back Up Time** (Hrs)	Weight (Kg)	Dimensions in mm (W x H x D)
SPSCCK-307	12V	7.2 Ah	SMF/VRLA	85	36Cell 60W	12V 1A	8	5W	15	5.5	300 x 150 x 130
SPSCCK-312	12V	12 Ah	SMF/VRLA	145	36Cell 75W	12V 2A	8	9W	15	7.5	300 x 150 x 130
SPSCCK-312Li	12.8V	12 Ah	LiFePO4	150	36Cell 75W	12V 2A	6	5W	15	4.5	300 x 150 x 130
SPSCCK-318Li	12.8V	18 Ah	LiFePO4	230	36Cell 100W	12V 2A	6	9W	23	5.5	300 x 150 x 130

* Charging time is subjective to available charge in battery and also based on solar intensity (charging voltage and current supplied by solar panel through out day)

** Back up time is subjective to actual charge available in battery and also based on total load connected to the unit in terms of watts

*** User can connect 36 cell solar panels up to 400W to this product and run Solar Products (table fan, ceiling fan, solar air cooler, 12V devices like D2H set top box, aquarium pumps, wi-fi routers etc) throughout the day and through charged battery in night time



Applications :



For Product Videos
Scan QR Code



Sparkel Power And Automation Solutions.

S. No.7/3, Plot No.16, Anusaya Park Kharadi ,Pune-411 014, Maharashtra ,India.

For Trade Enquiries : + 91 91680 12136 | mktg@sparkelindia.com | www.sparkelindia.com

220V LED BULB/TUBE UPS

✓ **Portable UPS** with output voltage of 12V DC to run DC lighting, DC Fan and other 12V DC Rated Products load and 220V to run LED Bulbs, LED Tubes, DTH Set Top Box, Wi-Fi Router up to 45Watts total

✓ **Dual Charging Option:** Mains Charging And / Or Solar Charging (Solar Panel is not supplied along with kit)

✓ **Charging,** UPS On, Battery Low & Mains ON Indication

✓ **Inbuilt Fuse** for short circuit protection, battery Overcharge and over-discharge protection

✓ **Separate switches and sockets** available on board for connecting products and turning On/Off Inbuilt LED Light

✓ **In Built 6W x 2 LED Light** for emergency purpose (SPCFL-50B/50BLi and SPCFL-50R/50RLi)



SPCFL-50B/50BLi



SPCFL-50R/50RLi



SPUP-45BL/45BLLi

✓ **In Built 6W LED** Light for emergency purpose (SPUP-45BL/45BLLi)

✓ **Easy replacement** of internal battery

✓ **Ultra portable** and hence widely used by vegetable sellers or road side eating joints

Model No	Battery Voltage (Volts)	Battery Capacity (Ah)	Battery Type	Total Watt - Hours (Whr)	Compatible Solar Panel (Watts)	Mains Adapter Rating	Charging Time* (Hrs)	Load Connected in Watts	Back Up Time** (Hrs)	Weight (Kg)	Dimensions in mm (W x H x D)
SPCFL-50B or SPCFL-50R	12V	7.2 Ah	LiFePO4	85	36Cell 40W	230V to 12V 0.7A	8	6W	14	3.0	240 x 300 x 120
SPCFL-50BLi or SPCFL-50RLi	12.8V	6 Ah	LiFePO4	75	36Cell 50W	230V to 12V 0.7A	8	6W	12	2.2	240 x 300 x 120
SPUP-45BL	12.8V	7.2 Ah	SMF/VRLA	85	36Cell 40W	230V to 12V 0.7A	6	6W	14	3.5	320 x 250 x 100
SPUP-45BLi	12.8V	6 Ah	LiFePO4	75	36Cell 50W	230V to 12V 0.7A	8	6W	12	2.5	320 x 250 x 100

* Charging time is subjective to available charge in battery and also based on solar intensity (charging voltage and current supplied by solar panel through out day) LiFePO4

** Back up time is subjective to actual charge available in battery and also based on total load connected to the unit in terms of watts.

*** Do Not Connect solar panel of more capacity than mentioned in above table



VEGETABLE SELLERS



FRUITS SELLERS



ROADSIDE EATING CARTS



STUDY LIGHTING



PORTABLE TELEVISION



KIRANA SHOPS

Applications :



Home



Tents



Security Cabins



Agricultural farm



Cattle Shed



Emergency Use

For Product Videos
Scan QR Code



For Trade Enquiries : + 91 91680 12136 | mktg@sparkelindia.com | www.sparkelindia.com

Follow us on : Sparkelindia

Portable UPS



SPSUPS-150

12V DC Rated Products Which Can be connected to LOAD terminals on Product



12V DC Load Upto 200W

Panels Upto 400W to Solar Terminals On Product



230V AC Rated Electronic Products which can be connected to 2 Pin Socket on Product



230V AC Load Upto 150W

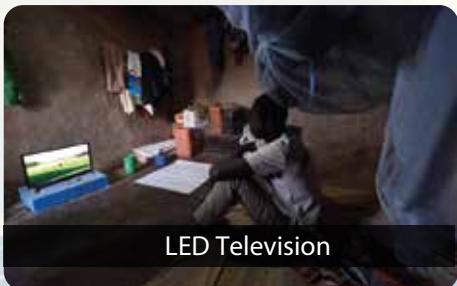
12V Battery Upto 75Ah to Battery Terminals on Product



- ✓ **Portable UPS** with output voltage of 12V DC to run DC lighting, DC Fan and other 12V DC Rated Products load (Up to 200W) and 220V to run Electronic Load Only like LED Tubes, DTH Set Top Box, Wi-Fi Router, LED TV, Deskjet Printers etc (Up to 150W)
- ✓ **Dual Charging Option:** Mains Charging And / Or Solar Charging (Solar Panel is not supplied along with kit)
- ✓ **On Board LED Indications:** Overload, Low Battery, Solar Available, Mains Available, Running On Battery
- ✓ **3A Short Circuit or Overcurrent** Fuse Protection for 230V AC Mains Input
- ✓ **20A Short Circuit or Overcurrent** Fuse Protection for 12V DC Load Connected to UPS
- ✓ **Connections Available on Product:** Solar Panel Input, 12V DC Load Output, 230V DC Load Output, 12V Battery Input
- ✓ **Works as online UPS** with transfer time of less than 1 milli seconds
- ✓ **Maximum Solar Panel Input:** 36 cell panels up to 400Watts
- ✓ **Recommended Maximum Battery Size:** 75Ah (if only charged through mains) 150Ah (if charged through mains & solar)
- ✓ **Recommended Battery Type:** Lead Acid, SMF or Solar Gel Battery
- ✓ **Compatible with LifePO4 battery** – check LifePO4 Battery size Vs Solar Panel Capacity Chart

Model No	Battery Voltage (Volts)	Battery Capacity (Ah)	Battery Type	Total Watt - Hours (Whr)	Compatible Solar Panel (Watts)	Mains Adapter Rating	Charging Time* (Hrs)	Load Connected in Watts	Back Up Time** (Hrs)	Weight (Kg)	Dimensions in mm (W x H x D)
SPSUPS-150	12.8V	42 Ah	LifePO4	540	36Cell 150 Watts	12V5A	6	100W	5	1.5	130x210x90
SPSUPS-150	12V	75 Ah	SMF/VRLA/Gel	900	36Cell 200 Watts	12V5A	8	150W	6	1.5	130x210x90
SPSUPS-150	12V	150 Ah	SMF/VRLA/Gel	1800	36Cell 400 Watts	12V5A	8	250W	7	1.5	130x210x90

* Do Not Connect solar panel of more capacity than mentioned in above table



Applications :



For Product Videos Scan QR Code



For Trade Enquiries : + 91 91680 12136 | mktg@sparkelindia.com | www.sparkelindia.com

Follow us on : Sparkelindia



Scan QR Code to
Purchase/Check Review



**SPSUPSK-412/412Li/
418Li/424Li**

- ✓ **Portable UPS with output voltage** of 12V DC to run DC lighting, DC Fan and other 12V DC Rated Products load (Up to 200W) and 220V to run Electronic Load Only like LED Tubes, DTH Set Top Box, Wi-Fi Router, LED TV, Deskjet Printers etc (Up to 150W)
- ✓ **Transfer time of less than 1 mili seconds** makes it use as ONLINE UPS, to run devices without any interruption/ restart during electrical power cut
- ✓ **Inbuilt Battery:** 12V Sealed Lead Acid Battery or 12.8V Lithium Phosphate (LiFePO4) Battery
- ✓ **Triple Charging Option:** Mains Charging And / Or Solar Charging (Solar Panel is not supplied along with kit) And/Or From cigarette Lighter Socket of Car
- ✓ **On Board LED Indications:** Overload, Low Battery, Solar Available, Mains Available, Running On Battery 3A Short Circuit or Overcurrent Fuse Protection for 230V AC Mains Input
- ✓ **20A Short Circuit or Overcurrent** Fuse Protection for 12V DC Load Connected to UPS
- ✓ **Connections Available on Product:** Solar Panel Input, 12V DC Load Output, 230V DC Load Output, 12V External Battery Input On-Board B22 LED Bulb (230V) Holder, 3 nos of DC Pin to connect 12V LED Bulbs or other 12V DC Rated Products Works as online UPS with transfer time of less than 1 mili seconds

- ✓ **Maximum Solar Panel Input:** 36 cell panels up to 400Watts
- ✓ **Recommended Maximum Battery Size:** 75Ah (if only through mains) 150Ah (if charged through mains & solar)
- ✓ **Recommended Battery Type:** Lead Acid, SMF or Solar Gel Battery or Lithium Phosphate Battery
- ✓ **Compatible with LifePO4 battery** – check LifePO4 Battery size Vs Solar Panel Capacity Chart
- ✓ **External Battery Input** – charged battery can be connected externally to increase run/back up time

Model No	Battery Voltage (Volts)	Battery Capacity (Ah)	Battery Type	Total Watt - Hours (Whr)	Compatible Solar Panel (Watts)	Mains Adapter Rating	Charging Time* (Hrs)	Load Connected in Watts	Back Up Time** (Hrs)	Weight (Kg)	Dimensions in mm (W x H x D)
SPSUPSK-412	12V	12 Ah	SMF/VRLA/Gel	144	36Cell 75 Watts	12V 5A	8	100W	1.5	4.5	250 x 300 x 170
SPSUPSK-412Li	12.8V	12 Ah	LiFePO4	155	36Cell 75 Watts	12V 5A	6	100W	2.0	3.0	250 x 300 x 170
SPSUPSK-418Li	12.8V	18 Ah	LiFePO4	230	36Cell 100 Watts	12V 5A	6	100W	2.5	3.5	250 x 300 x 170
SPSUPSK-424Li	12.8V	24 Ah	LiFePO4	310	36Cell 200 Watts	12V 5A	6	100W	4.0	4.5	250 x 300 x 170

Applications :



For Product Videos
Scan QR Code

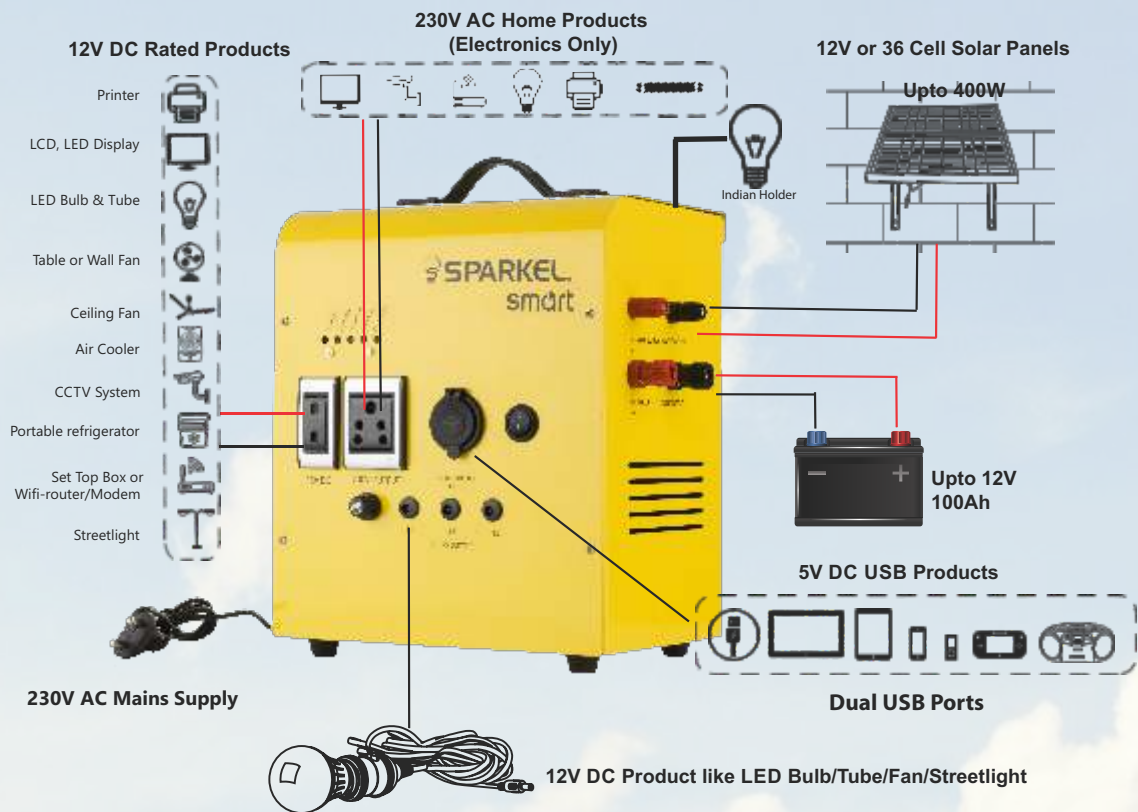


Sparkel Power And Automation Solutions.

S. No.7/3, Plot No.16, Anusaya Park Kharadi ,Pune-411 014, Maharashtra ,India.

For Trade Enquiries : + 91 91680 12136 | mktg@sparkelindia.com | www.sparkelindia.com

PORTABLE UPS



- * Do Not Connect solar panel of more capacity than mentioned in above table
- ** Do Not Exceed Total Battery Capacity (Internal + External) to more than 100Ah
- *** Strictly follow Battery Capacity Vs Solar Panel Size Chart for LifePO4 Battery (to avoid permanent damage to the battery)



Sparkel Power And Automation Solutions.

S. No.7/3, Plot No.16, Anusaya Park Kharadi ,Pune-411 014, Maharashtra ,India.

For Trade Enquiries : ☎ + 91 91680 12136 | ✉ mktg@sparkelindia.com | 🌐 www.sparkelindia.com

PURE SINE WAVE PORTABLE SOLAR GENERATOR



Scan QR Code to
Purchase/Check Review

- ✓ **Pure sine wave portable UPS/Solar Generator** with output voltage of 12V DC to run DC lighting, DC Fan and other 12V DC Rated Products load (Up to 500W/1000W) and 220V AC to run household appliances or 1 Phase Pumps
- ✓ **Inbuilt Battery:** 12V Sealed Lead Acid Battery or 12.8V Lithium Phosphate (LiFePO4) Battery
- ✓ **Triple Charging Option:** Mains Charging And / Or Solar Charging (Solar Panel is not supplied along with kit) And/Or From cigarette Lighter Socket of Car
- ✓ **On Board LED Indications:** Input Mains, Charge Available or Low battery and Protect/Overload, Battery Voltage Value
- ✓ **16A Short Circuit** or Overcurrent MCB Protection for 230V AC Mains Output
- ✓ **Connections Available on Product:** Solar Panel Input, 2 USB Ports of 5V 1.5A each, 230V AC Load Output, 12V
- ✓ **External Battery Input**, 3 nos of DC Pin to connect 12V LED Bulbs or other 12V DC Rated Products
- ✓ **Maximum Solar Panel Input:** 36 cell panels up to 600 Watts
- ✓ **Recommended Maximum Battery Size** (No Battery Model): 75Ah (if only charged through mains) 150Ah (if charged through mains & solar)



SPSPORT-1000/1078Li



SPSPORT-500/548Li

- ✓ **Recommended Battery Type:** Lead Acid, SMF or Solar Gel Battery or Lithium Phosphate Battery
- ✓ **Compatible with LifePO4 battery** (check below table for internal battery models) – check LifePO4 Battery size Vs Solar Panel Capacity Chart
- ✓ **External Battery Input** – charged battery can be connected externally to increase run/back up time
- ✓ **Compatible with Pump:** 500W Model can support up to 0.5Hp pump and 1000W model can support up to 0.75Hp Pump

Model No	Battery Voltage (Volts)	Battery Capacity (Ah)	Battery Type	Total Watt - Hours (Whr)	Compatible Solar Panel (Watts)	Mains Adapter Rating	Charging Time* (Hrs)	Load Connected in Watts	Back Up Time** (Hrs)	Weight (Kg)	Dimensions in mm (W x H x D)
SPSPORT-500	External Battery	NA	SMF/VRLA/Gel (External)	NA	Based on Ext Battery Ah	12V 10A	NA	100W	Based on Ext Battery Ah	5.0	350 x 210 x 250
SPSPORT-548Li	12.8V	48 Ah	LifePO4	600	36Cell 200 Watts	12V 10A	6	100W	6.0	11.0	350 x 210 x 90
SPSPORT-1000	External Battery	NA	SMF/VRLA/Gel (External)	NA	Based on Ext Battery Ah	12V 10A	NA	100W	Based on Ext Battery Ah	7.0	400 x 280 x 270
SPSPORT-1078Li	12.8V	78 Ah	LifePO4	900	36Cell 300 Watts	12V 10A	6	100W	12.0	16.0	400 x 280 x 270

Applications :



For Product Videos
Scan QR Code



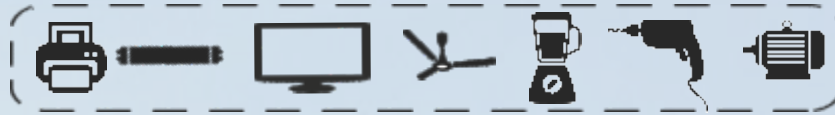
Sparkel Power And Automation Solutions.

S. No.7/3, Plot No.16, Anusaya Park Kharadi ,Pune-411 014, Maharashtra ,India.

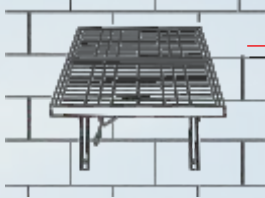
For Trade Enquiries : + 91 91680 12136 | mktg@sparkelindia.com | www.sparkelindia.com

PURE SINE WAVE PORTABLE SOLAR GENERATOR

230V AC Home Products
(Electronics/Electrical Appliances)

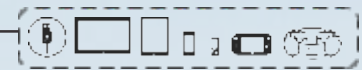


12V or 36 Cell Solar Panels
Upto 400W



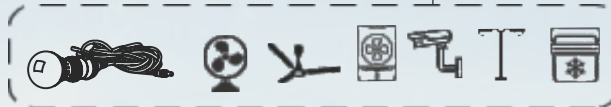
Car Battery or LifePO4 Battery

5V DC USB Products



Dual USB Ports

Cig Lighter Female Socket



12V DC Product like LED Bulb/Tube/Fan/Streetlight/Ceiling Fan/Solar Air cooler

- * For External Battery model – user can connect Car Battery or available battery as External Battery to operate unit
- ** Do Not Connect solar panel of more capacity than mentioned in above table
- *** Do Not Exceed Total Battery Capacity (Internal + External) to more than 100Ah
- **** Strictly follow Battery Capacity Vs Solar Panel Size Chart for LifePO4 Battery (to avoid permanent damage to the battery)



COMPUTER SCREEN (UPTO 100W)



EXTERNAL BATTERY CONNECTION



12V DC MOSQUITO KILLER



MULTIPURPOSE USE



GARDEN PUMP 1PH (UPTO 0.75HP)



CORDED DRILL MACHINE



TO RUN MEDICAL EQUIPMENT



BLENDER/MIXER (UPTO 500W)



GENERATOR IN LADAKH TRIP

Sparkel Power And Automation Solutions.

S. No.7/3, Plot No.16, Anusaya Park Kharadi ,Pune-411 014, Maharashtra ,India.

For Trade Enquiries : + 91 91680 12136 | mktg@sparkelindia.com | www.sparkelindia.com

PURE SINE WAVE PORTABLE SOLAR GENERATOR



Scan QR Code to
Purchase/Check Review



SPSPORT-1085SG/1102Li

- ✓ **Pure sine wave portable UPS/Solar Generator** with output voltage of 12V DC to run DC lighting, DC Fan and other 12V DC Rated Products load and 220V AC to run household appliances or 1 Phase Pumps, up to 1000 Watts
- ✓ **Inbuilt Battery:** 12V Sealed Solar GEL Battery or 12.8V Lithium Phosphate (LiFePO4) Battery
- ✓ **Triple Charging Option:** Mains Charging And / Or Solar Charging (Solar Panel is not supplied along with kit) And/Or From cigarette Lighter Socket of Car
- ✓ **On Board LED Indications:** Input Mains, Charge Available or Low battery and Protect/Overload, Battery Voltage Value
- ✓ **16A Short Circuit** or Overcurrent MCB Protection for 230V AC Mains Output
- ✓ **Connections Available on Product:** Solar Panel Input, 2 USB Ports of 5V 1.5A each, 230V AC Load Output, 12V External Battery Input, 3 nos of DC Pin to connect 12V LED Bulbs or other 12V DC Rated Products
- ✓ **Maximum Solar Panel Input:** 36 cell panels up to 600 Watts
- ✓ **Recommended Maximum Battery Size:** 85Ah (Solar GEL Battery) or 102Ah (LiFePO4 Battery)
- ✓ **Recommended Battery Type:** Lead Acid, SMF or Solar Gel Battery or Lithium Phosphate Battery
- ✓ **Compatible with LifePO4 battery** (check below table for internal battery models) – check LifePO4 Battery size Vs Solar Panel Capacity Chart
- ✓ **External Battery Input** – charged battery can be connected externally to increase run/back up time
- ✓ **Compatible with Pump:** Can support up to 0.75Hp Pump, Single Phase

Model No	Battery Voltage (Volts)	Battery Capacity (Ah)	Battery Type	Total Watt - Hours (Whr)	Compatible Solar Panel (Watts)	Mains Adapter Rating	Charging Time* (Hrs)	Load Connected in Watts	Back Up Time** (Hrs)	Weight (Kg)	Dimensions in mm (W x H x D)
SPSPORT-1000	12V	85Ah	Solar Gel	1400	36Cell 300 Watts	12V 10A	8	100W	10.0	40.0	470 x 560 x 250
SPSPORT-1102Li	12.8V	102 Ah	LifePO4	1400	36Cell 300 Watts	12V 10A	6	100W	14.0	35.0	470 x 560 x 250

Applications :



For Product Videos
Scan QR Code



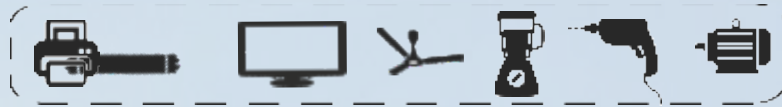
Sparkel Power And Automation Solutions.

S. No.7/3, Plot No.16, Anusaya Park Kharadi ,Pune-411 014, Maharashtra ,India.

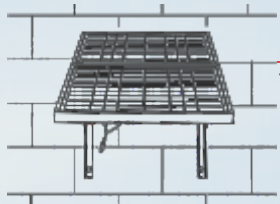
For Trade Enquiries : ☎ + 91 91680 12136 | ✉ mktg@sparkelindia.com | 🌐 www.sparkelindia.com

PURE SINE WAVE PORTABLE SOLAR GENERATOR

230V AC Home Products
(Electronics/Electrical Appliances)



12V or 36 Cell Solar Panels
Upto 400W



Car Battery or LifePO4 Battery



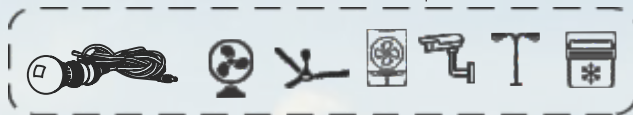
Cig Lighter Female Socket



5V DC USB Products



Dual USB Ports



12V DC Product like LED Bulb/Tube/Fan/Streetlight/Ceiling Fan/Solar Air cooler

* Do Not Connect solar panel of more capacity than mentioned in above table

** Strictly follow Battery Capacity Vs Solar Panel Size Chart for LifePO4 Battery (to avoid permanent damage to the battery)



Sparkel Power And Automation Solutions.

S. No.7/3, Plot No.16, Anusaya Park Kharadi ,Pune-411 014, Maharashtra ,India.

For Trade Enquiries : ☎ + 91 91680 12136 | ✉ mktg@sparkelindia.com | 🌐 www.sparkelindia.com

SOLAR WINDOW AIR COOLER RESIDENTIAL/ INDUSTRIAL TYPE



Scan QR Code to
Purchase/Check Review



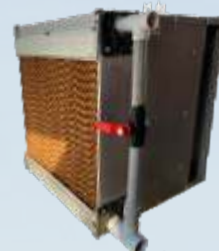
SPSCC-300M



SPSAC-RESI01



SPSAC-INDU01



- ✓ **India's first Solar Window air cooler** with efficient and environmental friendly evaporative cooling technology
- ✓ **Fits into modular windows** similar to window air conditioner, results into space saving and improve performance
- ✓ **High Efficiency** honeycomb cooling pads for enhanced cooling
- ✓ **Operates through:** Solar Panel, Electricity or through charged battery
- ✓ **Low Energy Consumption:** Runs on half of operating cost of a ceiling fan (only 35W Vs 75W of ceiling fan)
- ✓ **Whisper quiet performance** with 10" Blade and DC Motor, Operates at 60 DB Level at maximum speed
- ✓ **Water Tank (To be purchased separately) :** Choice of installing any tank as water tank Indoor or Outdoor
- ✓ **Three speed Control knob** with maximum speed up to 2000 rpm , Tank Empty Indication, Input/Mains Indication, Separate On/Off Switch for Pump and motor
- ✓ **Available in two models** - 1) Operated directly through solar panel or electrical mains 2) Operates through solar panel or through charged battery or electrical mains (auto shift from solar to battery)
- ✓ **Optional SPSCC-300M** (Applicable for model 2) – Separate unit with controller and inbuilt 12Ah LifePO4 Lithium battery can be purchased
- ✓ **No replacement of cooling pads required** as cooling pads can be cleaned using car pressure washer
- ✓ **Modular Type Design** – Can be dismantled and stored after it's usage in summer season
- ✓ **Square shape** enables it's usage as STANDING cooler when kept on square fabricated stand and can be used in passage/balcony

Model No	Battery Voltage (Volts)	Speed (Operated through mains)	Battery Type	Power Consumption (Watts)	Fit for Room Size	Mains Charger Rating	Back Up Time** (Hrs)	Weight (Kg)	Dimensions in mm (W x H x D)
SPSAC-RESI01 10" Blade	12V or 36 Cell 75W to 150W	Speed 1: 1400 Rpm, Speed 2: 1600 Rpm, Speed 3: 2000 Rpm	SMF/ VRLA/Gel/ LifePO4 (External)	25W @ Speed 1, 30W @ Speed 2, 35W @ Speed 3	15 sqft x 15 sqft	12V 10A	Around 5 hours at 1600 Rpm	10.0	400 x 500 x 500
SPSAC-INDU01 12" Blade	12V or 36 Cell 150W to 400W	Speed 1: 1400 Rpm, Speed 2: 1500 Rpm, Speed 3: 1600 Rpm	SMF/ VRLA/Gel/ LifePO4 (External)	55W @ Speed 1, 65W @ Speed 2, 75W @ Speed 3	40 sqft x 40 sqft	12V 10A	Around 2.0 hours at 1600 Rpm	15.0	600 x 600 x 600

* For External Battery model – user can connect Car Battery or available battery as External Battery to operate unit

**Do Not Connect solar panel of more capacity than mentioned in above table

For Product Videos
Scan QR Code



Sparkel Power And Automation Solutions.

S. No.7/3, Plot No.16, Anusaya Park Kharadi ,Pune-411 014, Maharashtra ,India.

For Trade Enquiries : + 91 91680 12136 | mktg@sparkelindia.com | www.sparkelindia.com

SOLAR WINDOW AIR COOLER RESIDENTIAL/ INDUSTRIAL TYPE

BENEFITS



Runs on operating cost of a fan



Works through solar panel, 12V Battery or electrical mains



Use it inside, use it outside



Delivers fresh, filter cool air

COOLING TIPS



Switch on to cooling mode



Ensure sufficient water in the tank



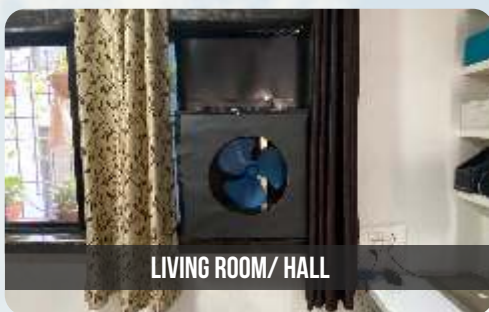
Keep window/door open for cross ventilation



Honeycomb cooling pad - Operates like NEW after annual cleaning



SOLAR PANEL OPERATED



LIVING ROOM/ HALL



WINDOW MOUNDED



EXTERNAL WATER TANK



AUTO WATER RE-FILL



SPACE SAVING SETUP



SMALL WAREHOUSE



SMALL OFFICE



GREEN-HOUSE



SECURITY CABINS



HALL



RURAL HOMES

Sparkel Power And Automation Solutions.

S. No.7/3, Plot No.16, Anusaya Park Kharadi ,Pune-411 014, Maharashtra ,India.

For Trade Enquiries : + 91 91680 12136 | mktg@sparkelindia.com | www.sparkelindia.com



For Trade Enquiries : + 91 91680 12136 | mktg@sparkelindia.com | www.sparkelindia.com

Follow us on  : [Sparkelindia](#)